

# Green Chapter Certification



UNIVERSITY OF  
**ILLINOIS**  
URBANA-CHAMPAIGN

**iSEE**

Institute for Sustainability, Energy, and Environment





# Contents

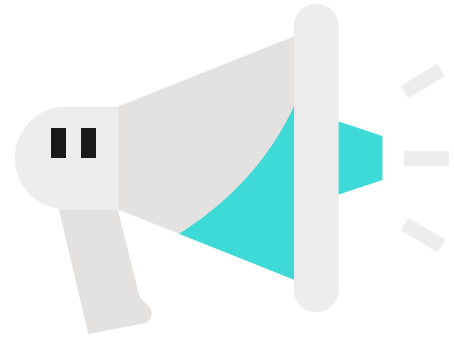


01	<i>Why Certify?</i>	Benefits and goals of certification
02	<i>Overview of Certification</i>	Steps to certification
03	<i>Prerequisites</i>	Five prerequisites to begin the program
04	<i>Required &amp; Elective Actions</i>	Actions towards certification
05	<i>Ranking</i>	Ranking criteria for certification levels

# WHY CERTIFY?



What are the benefits? How can certification support the goals of your chapter?



## *Promote*

Certification shows others  
- prospective members  
and peers - that your  
chapter is actively working  
to better itself and run  
sustainably.



## *Save Money*

Many of the small efforts  
to meet actions - such as  
turning off lights and  
reducing water use - saves  
you money! Win Win!



## *Encourage Participation*

Joining this program provides  
members with new opportunities to  
participate in the chapter by creating  
new positions and committees to  
manage the chosen goals.



## *Make an impact*

The overall goal of the  
program is to encourage  
sustainability - you can  
have a part in improving  
campus life!



# Overview of Certification Process

What's next?



## *Complete the Interest Form*

Use the hyperlink above or see all links on quick links slide

## *Meet Prerequisites*

Jump to the next slide for all five prerequisites.

## *Identify Best Fit Actions*

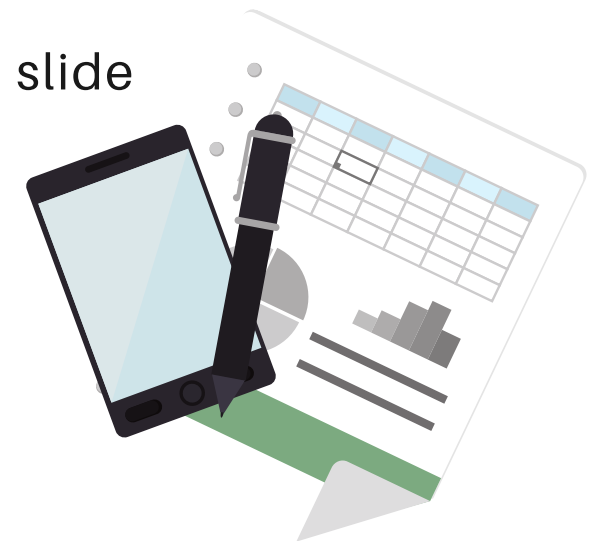
Identify what actions are best matched to the unique skills, interests, and lifestyles of your chapter members.

## *Commit!*

Commit to those checklist actions, and make them a reality in the day to day lives of your members.

## *Spread the Word*

Promote your chapter as a Certified Green Chapter, and spread the word about what that means to prospective members and other chapters.



# Prerequisites:

What to establish before beginning the certification process



01

## *Leadership*

Elect a member to be the official Sustainability Ambassador to be the point of contact.



02

## *Paper*

Use a minimum of 30% recycled copy paper for all chapter prints, flyers, etc.



03

## *Lights*

Turn off lights, monitors, and other devices when unused/ at night.



04

## *Food*

Offer at least one vegetarian or vegan option for events.



05

## *Recycling*

Make sure to have and use clearly labeled recycling bins.

# REQUIRED ACTIONS

All four actions must be met regardless of certification level- no exceptions!



## **GO PAPERLESS**

Go paperless wherever possible. For example, email flyers rather than printing them.



## **PRINTING**

Use a minimum of 30% recycled content paper when you print.



## **LIGHTS**

When not in use, turn off the juice! Designate a role for checking all unused lights at night.



## **RECYCLE**

Sign up for Recycling Service Pickup. Provide clearly labeled recycling bins.

# Elective Action Groups

Select at least 5 activities from within these groups.

05

*Innovation & Engagement*

Your ideas matter - let us know!

04

*Transportation*

Strive to walk, bike, and carpool more.

03

*Waste Minimization & Recycling*

Reduce, reuse, recycle!

02

*Utility Conservation*

Conserve energy, water, and heat.

01

*Food & Dining*

How to green your kitchen and diet.



# FOOD & DINING



Elective actions



## *Meatless Monday*

Every Monday, go vegetarian/vegan for all chapter meal options. OR gain 1 point/ 5 members who stop eating red meat all together!



## *Shop Local*

Pledge to serve at least one meal a week using local fruits and vegetables. Stop by the Student Sustainable Farm!



## *Gardening*

Plant a garden, or start a compost pile. Anything grown at home helps minimize the environmental impact of food transport.

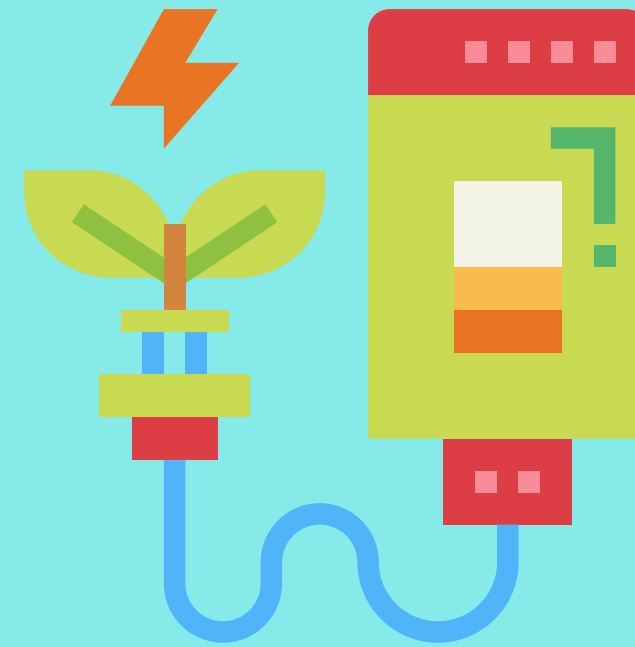


## *Shop Fair Trade*

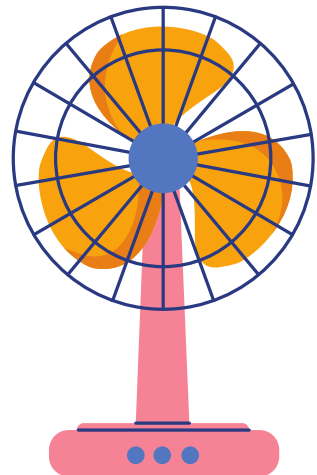
Purchase fair trade/sustainably sourced coffee, tea, and chocolate for common use.



# UTILITY CONSERVATION

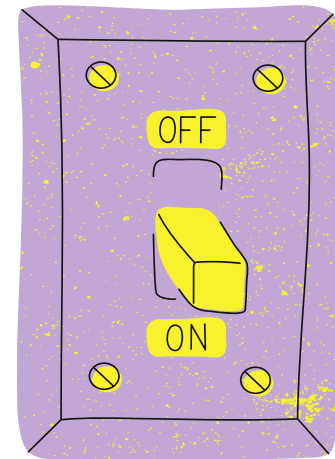


Elective actions



## *Temp Control*

Pull down window shades in common areas during the daytime during cooling season, and pull them up during heating season.



## *Hit the Switch*

Put signage near light switches reminding people to turn them off when the room is empty.



## *LED*

Use LED bulbs wherever possible in your house.



## *Showers*

Replace your existing shower heads with low-flow options.

# WASTE & RECYCLING



Elective actions



## *Eco Bags*

Make a shared set of reusable bags available for use when shopping. Reusable mesh produce bags are great options for fruits and veggies.



## *Bye K-Cups!*

Eliminate the use of single-use coffee pods. Conversely, buy a reusable pod and refill with your favorite ground coffee to continue using the device.



## *Coffee*

Zero out your coffee waste. Use a reusable filter and don't purchase individual sugar packets, creamer tubs, or stirrers.



## *Dish it Out*

Share a set of reusable dishes for meals, and limit disposable plate, cup, and flatware usage.



# WASTE & RECYCLING 2



Elective actions



## *Reusable Water Bottles*

Commit as a chapter to use reusable water bottles instead of drinking bottled water (one point for every five members who make the pledge).



## *Spirit Wear*

Order your spirit wear from vendors that uses recycled plastic fiber, organic cotton, or sustainable practices rather than mass unsustainable production.



# TRANSPORTATION

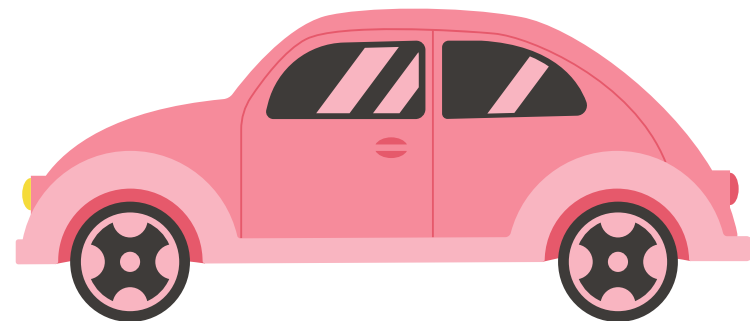


Elective actions



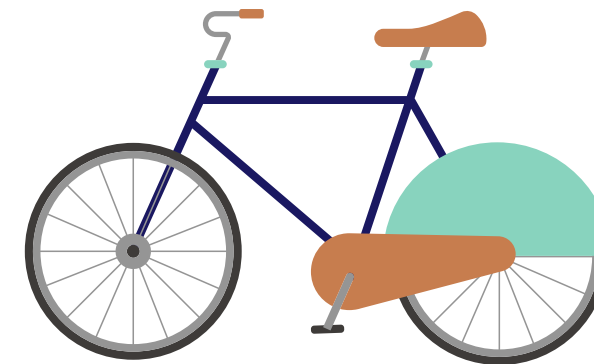
## *Bus Use*

Make sure all members are aware of the closest bus routes to your house and how to use their iCard as an MTD bus pass.



## *Carpool*

Set up a carpooling program to reduce the number of single occupant drives.



## *Bike Rack*

Provide a bike rack/bike storage for your house. Travel with bike locks to make sure your ride is secure!



## *Active Transport*

Use active transportation (bus, walking, bicycling) for all local travel when weather permits (one point/ five members who make the pledge).

# INNOVATION & ENGAGEMENT

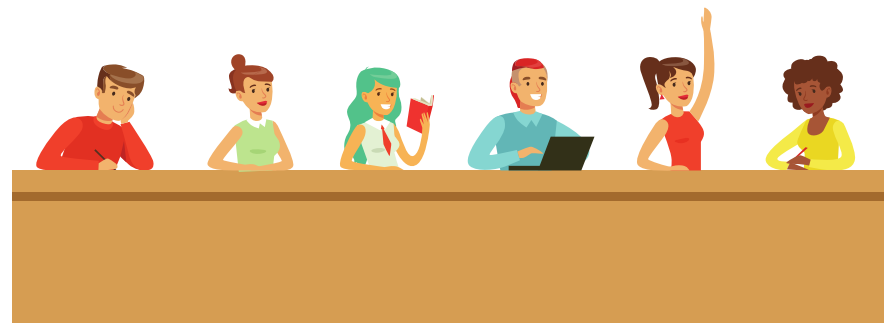


Elective actions



## *Refer your friends*

Refer another chapter to join the program (2 points).



## *Campus Activities*

As a chapter, participate in an on-campus sustainability program such as Illini Lights Out, the Campus Bike Census, or a lecture during the iSEE Congress. \*\*\*

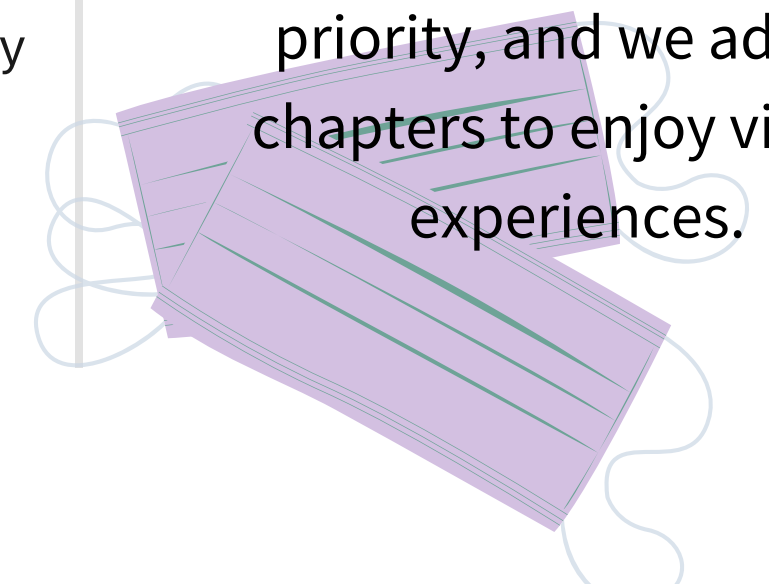


## *Green Team*

Form a Green Team to share the responsibilities of the Sustainability Ambassador and encourage creativity.

## \*\*\*Covid update:

We ask that you practice caution and social distancing at this time, especially for campus activities. Your health and safety is the main priority, and we advise chapters to enjoy virtual experiences.



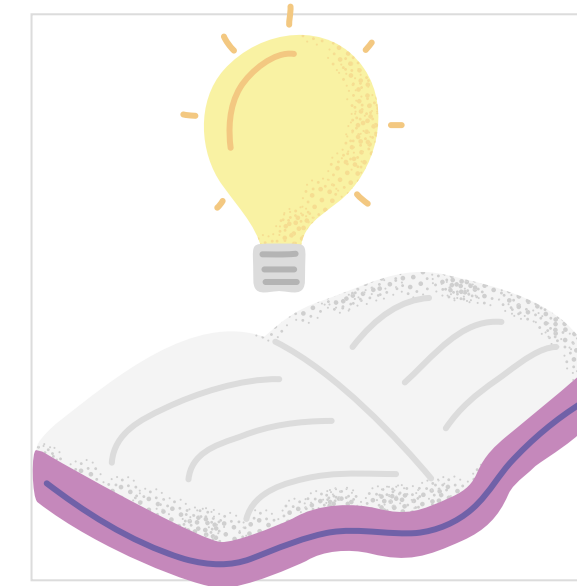
# INNOVATION & ENGAGEMENT 2

Elective actions



## *Academics*

Incorporate sustainability into your academic plans. You could become an SEE fellow, minor in sustainability, and so much more. (1point/5 members)



## *New Ideas*

Come up with your own initiative to make your chapter greener — and tell us about it!



# CERTIFICATION RANKINGS

Tally up all elective actions from each category - add more commitments for a higher ranking! These do not include the prerequisite actions.



**BRONZE**

5 Elective Actions



**SILVER**

10 Elective Actions



**GOLD**

15+ Elective Actions

Please note: some actions require making changes to your home, check with your property owner/national office before choosing more permanent/ structural elective actions! (Ex: adding a garden)

**Tally up your elective actions here**

## QUICK LINKS BY STEP

### 1) Interest Form

<https://docs.google.com/forms/d/e/1FAIpQLSezySGzkluEMMMjS2EB1Yj0Y8rTzUwWqd39Lm5f9qVb23SRoA/viewform>

### 2) Tally Actions

<https://docs.google.com/forms/d/e/1FAIpQLSciDyHGcZA9fHmGZHU5VwZZwIDgPijkHKARLKexi41QjCYFZg/viewform>

### 3) View Full Guide

<https://docs.google.com/document/d/1yMAFuQweqaC4THhp4kDZ497TW4pvt1AMRc0A25PK7R4/edit>

### 4) Visit the Greener Campus Website

<https://sustainability.illinois.edu/green-certifications/>

### 5) Contact FSA

<https://fsaffairs.illinois.edu/>







# Thank you for your interest in certification!

PLEASE VISIT OUR COMPREHENSIVE GUIDE  
FOR MORE DETAILS, RESOURCES, AND  
EXAMPLES

FOR QUESTIONS OR COMMENTS, PLEASE EMAIL  
ISEEGREENOFFICE@GMAIL.COM